

135-104 General Purpose Translator Board

The **Model 135-104 General Purpose Translator Board** is designed to support up to three separate analog sensors and one wind speed sensor, producing four independent analog output signals, one for each sensor. The board is designed for applications requiring either desktop enclosures, rack mounted enclosures, or outdoor box mounted enclosures. A +12 Vdc power source is required for circuit operation. Typical power consumption for the translator board is approximately 30 mA.

The translator board can be configured to provide one of three difference types of output signals; 0-5 Vdc, 0-1 mA, or 4-20 mA, 400 ohms maximum load. Sensors can be configured for any one of the three types of output signals or all three sensors can be set for the same type of output signal. All sensor input wiring and output signal wiring is accomplished using circuit board terminal blocks.

The circuit board has been designed to eliminate customer calibration of the circuitry. On most of the printed circuit boards manufactured by NovaLynx, there are no potentiometers for adjusting input or output signal levels. All board calibration is accomplished by selecting precision resistors to set the output span and zero to match the characteristics of the sensor as well as to meet the requirements of the user.

The Models 135-114 and 135-115 have additional alarm circuitry for applications requiring relay contact outputs to turn on and/or off weather sensitive equipment or for storm warnings. External relays can be provided to drive alarm equipment.

Specifications

Power: 12 Vdc \pm 20%

Power consumption: 20 mA nominal

Inputs: 1 each frequency (to 1 KHz), switch closure, ac voltage, 3 each voltage, resistance, current

Outputs: 4 each, specify one: 0-5 Vdc, 0-1 mA, 4-20 mA (into 400 ohms max), 4 each alarm 12 Vdc @ 100 mA (current source, 135-114/115 only), 12 Vdc battery voltage

Overall accuracy: 0.5%

Controls: Alarm set points adjustable with on-board or off-board potentiometer (135-114/115 only)

Operating temperature: -30° to +60°C

Storage temperature: -40° to +80°C

Relative humidity: 0-100% non-condensing

Connectors: Screw terminals

Size: 5.8" x 5.1"

Weight/shipping: 8 oz/1 lb

Ordering Information

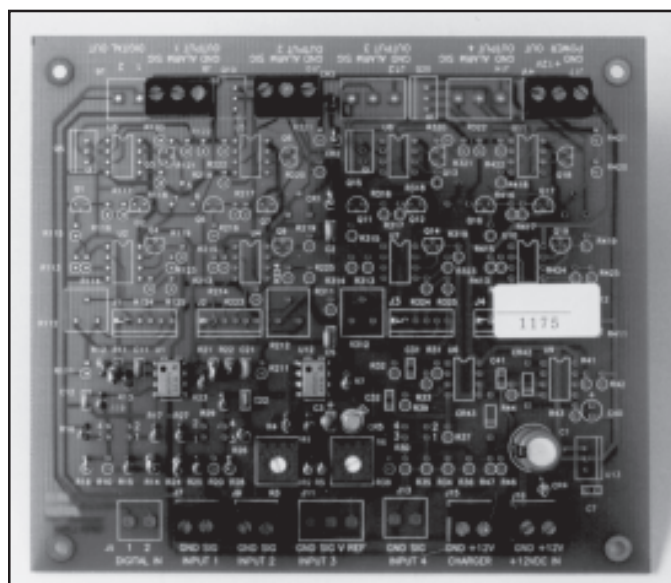
135-104	General Purpose Translator PCB, 4 channels, 0-5 Vdc, 0-1 mA, or 4-20 mA
135-114	General Purpose Translator PCB, 1 channel and 1 alarm output
135-115	General Purpose Translator PCB, 4 channels with alarms on 4 channels
350-290	Transient Protection, per input channel

The following must be specified when ordering:

Sensor model number for each input channel

Full scale values and units (example 0-100 mph, -40° to +120°F)

Desired output on each channel, 0-5 V, 0-1 mA, or 4-20 mA



Model 135-104 General Purpose Translator Board