

260-950 8" Rain Gauge Mounting Plate

The **260-950 8" Rain Gauge Mounting Plate** is a solid platform for mounting NovaLynx series 2500 and 2501 8" inlet rain gauges. The kit includes stainless steel bolts for securing the rain gauge to the platform. The receiver underneath the plate accommodates up to 1.36" (34 mm) diameter pipe (not supplied).

- Sturdy platform for NovaLynx Series 2500 and 2501 rain gauges (8" inlet)
- Stainless steel mounting hardware
- Accommodates 1.36" (34 mm) pipe
- Welded aluminum construction
- Painted black for durability



INSTALLATION

- 1) Refer to the rain gauge user manual for information on choosing a location for the rain gauge.
- 2) Obtain a suitable length of pipe on which to mount the rain gauge. A common pipe size is 1" Schedule 40 galvanized pipe. The pipe can be any convenient length, typically 2 to 4 feet (0.6 to 1.2 meter).
- 3) Secure the support pipe vertically. One option is to dig a post hole, install the pipe and cement it in for a sturdy, permanent installation. Allow the cement to cure.
- 4) Place the mounting plate on the pipe and secure it with the two ½" (short) hex bolts provided.
- 5) Assemble the legs to the rain gauge, then lower the gauge onto the plate
 - a) If the rain gauge is heated, pass the power cord through the large hole in the mounting plate.
 - b) If the rain gauge is Series 2501, rotate the gauge until the calibration screws (visible underneath the rain gauge) are over the two smaller holes (drawing, pg 2).
 - c) The signal cable can be threaded through the center hole and inside the mounting pipe if desired – provided it can come out at the right place to connect to the monitoring equipment.
- 6) Assemble the three ¾" (long) bolts loosely to the mounting feet, then check the level of the rain gauge using a carpenter's level or the bubble level inside the gauge. Add an extra washer under one of the legs to correct any large tilt. The legs themselves can be adjusted to fine-tune the level once the legs are bolted firmly.
- 7) Secure the cables to the mounting pipe with cable ties.



ORDERING INFORMATION

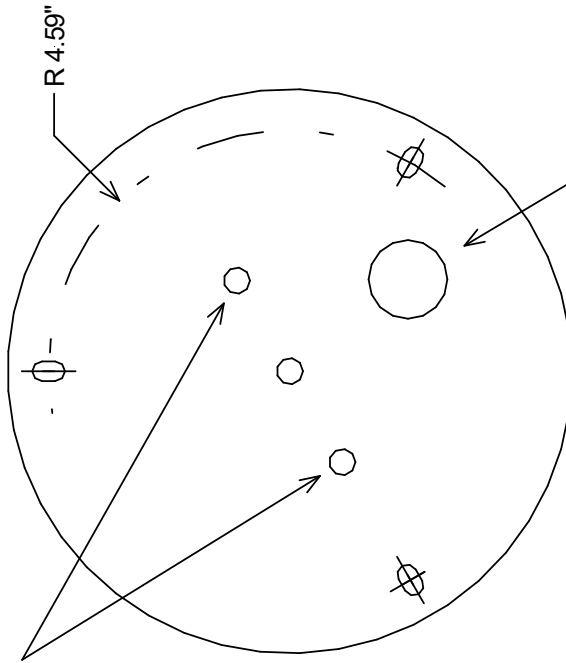
200-950 8" Rain Gauge Mounting Plate

**260-950 Rain Gauge Mounting Plate
(For 8" inlet rain gauges.)**

Top View

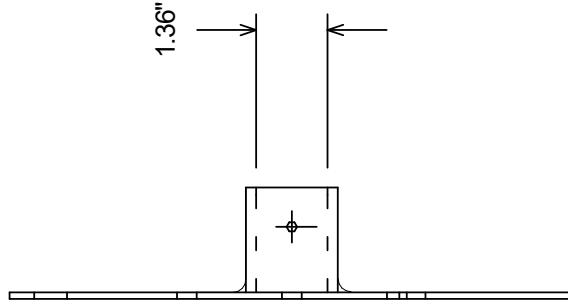
Series 2501 Rain Gauge

Align calibration screws over the calibration access holes.



Heated Rain Gauge
Feed power cable through this opening.

Side View



		C
TITLE Rain Gauge Mounting Plate		
PN 10000294		
MOD. USAGE	260-2500, 260-2501	SHEET 1 OF 1
BY	JDC	SCALE DWG. NO.
DATE	5-13-2020	1:3 890-0045-03

Material: Aluminum
Finish: Black Powder Coat